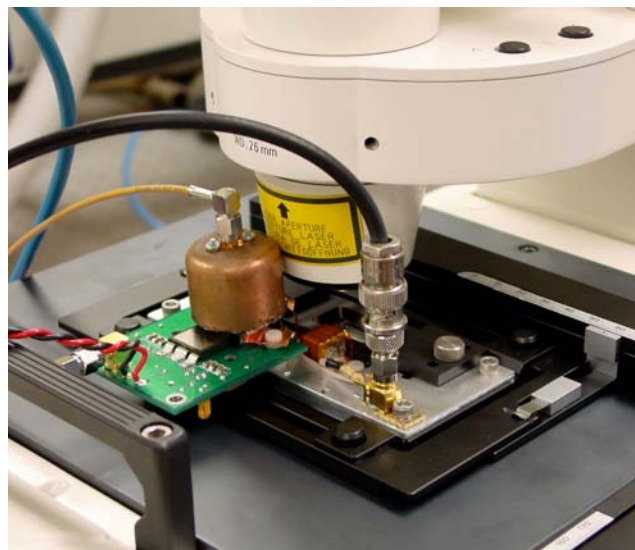


USC Pulsed Power for Biology

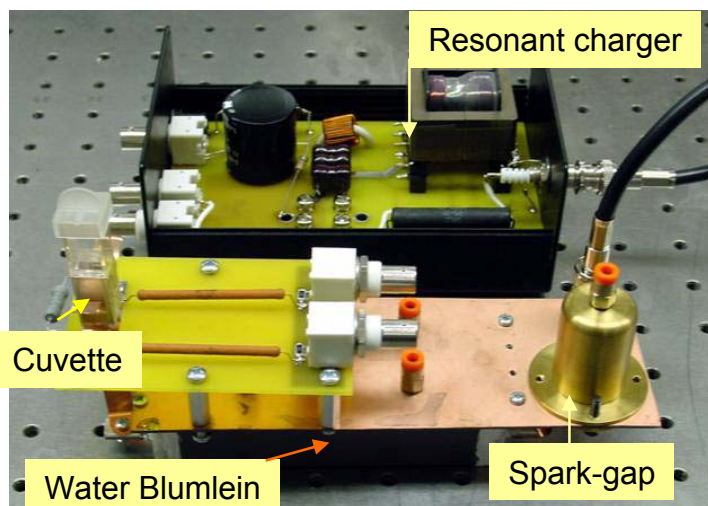
X. Gu, Q. Shui, Qingfang Yao, P. Wijetunga, M. Behrend, P.T. Vernier, A. Kuthi and M. Gundersen

- Inductive Adder Charged Cable Pulser
 - 4 kV, 10 Ω load, 5 ns
- Water Blumlein Mini Pulse Generator
 - 10 kV, 20 Ω load, 5 ns
- Ceramic Blumlein Mini Pulse Generator
 - 10 kV, 20 Ω load, 5 ns
- Rapid Resonant Charger for High rep rate operation of Water/Ceramic Blumlein
 - 10 kV, 50 mJ, 1,000 Hz, 1 sec Burst mode
- Micro Pulser for microscope slide load cell
 - 400 V, 5 ns, direct drive MOSFET
- Nanosecond Flashlamp for Real Time Microscopy of Cell Electroperturbation
 - 10 kV, 10 ns, 1 kHz

Micropulser attached to microscope



Water Blumlein Mini Pulser



Ceramic Microstrip Blumlein

